



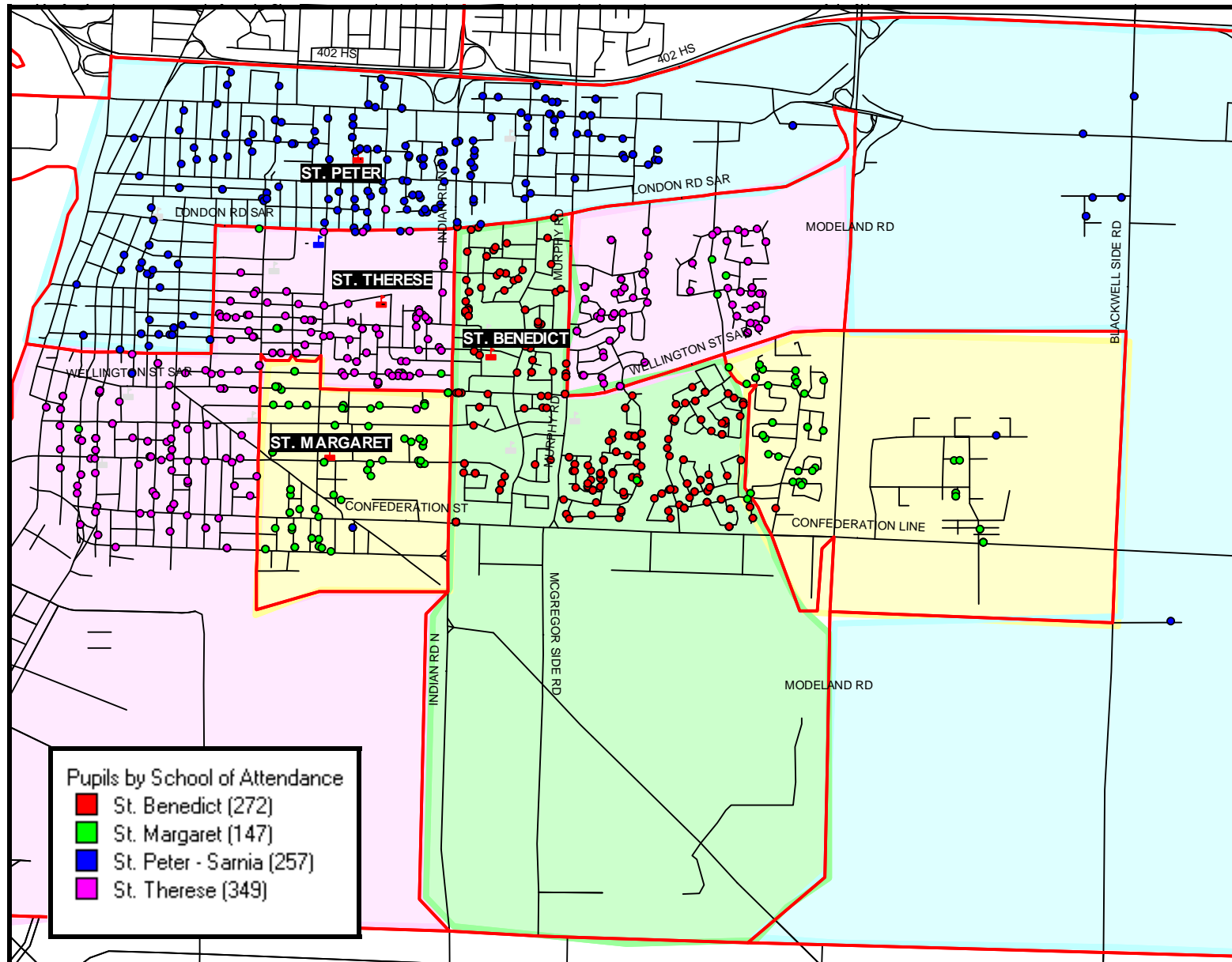
ST. CLAIR CATHOLIC DISTRICT SCHOOL BOARD

ACCOMMODATION REVIEW

SOUTH SARNIA

- ♦ **ST. BENEDICT**
- ♦ **ST. MARGARET**
- ♦ **ST. PETER**
- ♦ **ST. THERESE**

STUDENT DISTRIBUTION AND BOUNDARIES SOUTH SARNIA CATHOLIC SCHOOLS



BOARD: ST. CLAIR CATHOLIC DISTRICT SCHOOL BOARD
 SCHOOL: **SOUTH SARNIA TOTALS**

ENROLMENT BREAKDOWN:

		JK	SK	GR 1	GR 2	GR 3	GR 4	GR 5	GR 6	GR 7	GR 8	TOTAL	FTE
ACTUAL	October 31, 2002	128	130	135	145	162	135	150	166	157	182	1490	1361.00
	October 31, 2003	108	124	135	128	145	153	140	148	166	152	1399	1283.00
	October 31, 2004	87	107	108	121	115	136	144	140	145	158	1261	1164.00
	October 31, 2005	82	83	112	100	114	112	132	143	128	142	1148	1065.50
	October 31, 2006	82	91	84	102	102	116	112	122	137	126	1074	987.50
	October 31, 2007	79	87	97	81	99	105	116	108	114	139	1025	942.00
PROJECTED	October 31, 2008	82	83	90	91	80	101	103	113	102	114	959	876.50
	October 31, 2009	77	88	87	84	88	80	102	100	106	101	913	830.50
	October 31, 2010	79	82	91	81	82	89	79	100	94	106	883	802.50
	October 31, 2011	79	85	85	84	80	83	89	76	95	94	850	768.00
	October 31, 2012	79	85	89	80	83	81	82	86	73	92	830	748.00

	2007	2012
SCHOOL CAPACITY:	1484.00	1484.00
FTE	942.00	748.00
% OCCUPIED	63.5%	50.4%

ST. BENEDICT
975 Oak Avenue, Sarnia, N7S 1J4



FACILITY DETAIL

Building Age	1956, 1959, 1960, 1963, 1970	On The Ground Capacity	316
Gross Floor (sf)	>20 years 29,153 <20 years - Total 29,153	Enrolment (Oct'07)	250.5
Lot Area (acre)	5.02	% On The Ground Capacity	79.3
		Sep'07 Classrooms In Use	12
		Classrooms Vacant	2
		Classrooms Best Start *	2
		Total	16

RECAPP DATA

Renewal Costs – 5 yrs	\$2,883,572
Renewal Costs – 10 yrs	\$3,474,929
Facility Condition Index (FCI)	51.42%

ANNUAL UTILITY COSTS

Electricity	\$19,881
Natural Gas	\$22,179
Water	\$5,213
Cost per sq ft	\$1.62

STUDENT TRANSPORTATION

# of Eligible Riders	135
Average Ride Time (min)	8
Maximum Ride Time (min)	15
# of Buses	5
Transportation Cost	\$64,790

PROJECTED ENROLMENT

	FTE	OTG Capacity
Oct 31, 2008	235.5	74.5%
Oct 31, 2009	218.5	69.1%
Oct 31, 2010	207.0	65.5%
Oct 31, 2011	191.5	60.6%
Oct 31, 2012	178.5	56.5%

SCHOOL STAFF (FTE)

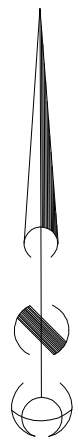
Principal/VP	1.0
Secretary	1.0
Custodian	1.4
Classroom Teachers	11.5
Resource Teachers	1.0
Itinerant Teachers	1.8
E.A.'s & Library Tech	4.3

* Classrooms leased by Daycare Providers are not included in OTG Capacity

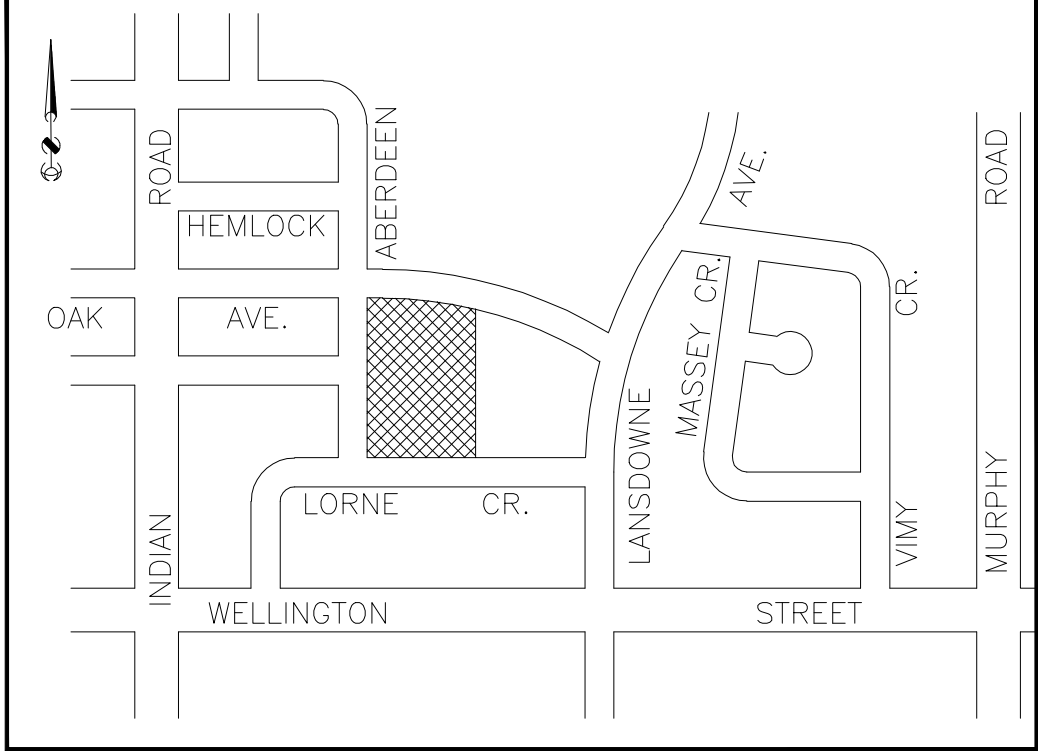
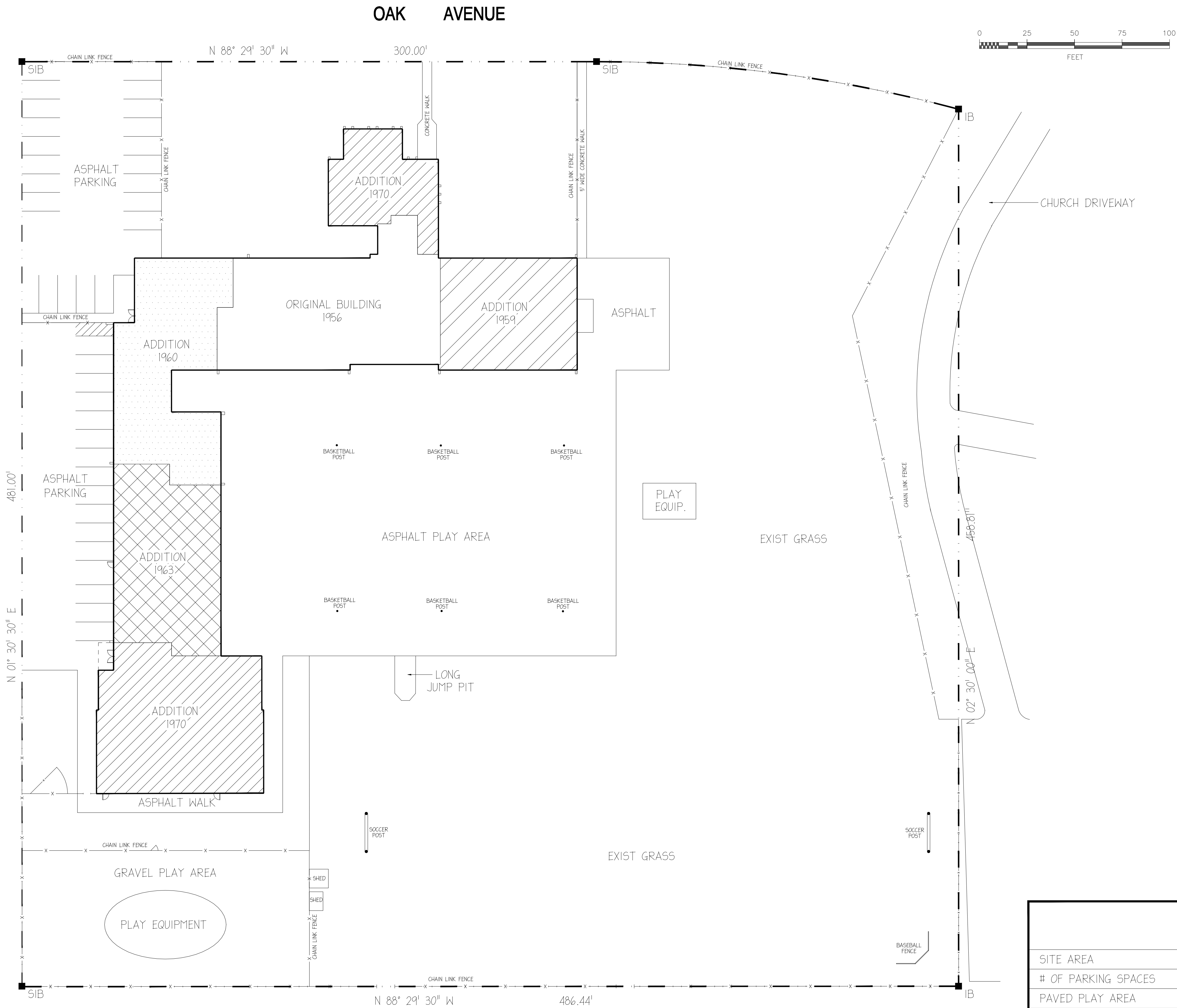
BOARD: ST. CLAIR CATHOLIC DISTRICT SCHOOL BOARD
 SCHOOL: **ST. BENEDICT**

ENROLMENT BREAKDOWN:

		JK	SK	GR 1	GR 2	GR 3	GR 4	GR 5	GR 6	GR 7	GR 8	TOTAL	FTE
ACTUAL	October 31, 2002	37	31	37	34	41	31	32	38	41	39	361	327.00
	October 31, 2003	22	39	30	33	33	41	32	27	40	42	339	308.50
	October 31, 2004	22	25	38	32	34	37	36	31	26	39	320	296.50
	October 31, 2005	27	20	28	34	34	29	32	35	30	29	298	274.50
	October 31, 2006	22	29	20	24	34	37	31	29	35	33	294	268.50
	October 31, 2007	19	24	29	22	21	32	34	28	29	34	272	250.50
PROJECTED	October 31, 2008	20	19	25	28	22	20	30	32	28	31	255	235.50
	October 31, 2009	19	20	20	24	27	21	19	28	31	29	238	218.50
	October 31, 2010	19	19	21	19	23	26	20	18	28	33	226	207.00
	October 31, 2011	19	20	20	20	19	22	25	18	18	30	211	191.50
	October 31, 2012	19	20	21	19	20	18	21	23	18	19	198	178.50



ABERDEEN DRIVE



KEY PLAN
N.T.S.

THE PROPERTY SURVEY ON THIS DRAWING WAS COMPLETED ON MARCH 28TH, 1991 MONTEITH AND SUTHERLAND LIMITED 2109 LONDON LINE SARNIA, ONTARIO N7T 7H2 TEL. (519) 542-4300

- THE CONTRACTOR SHALL CHECK AND VERIFY ALL DIMENSIONS AND REPORT ANY ERRORS OR OMISSIONS TO THE ENGINEER PRIOR TO PROCEEDING WITH ANY WORK ON THIS PROJECT. ALL DRAWINGS AND SPECIFICATIONS ARE THE PROPERTY OF THE ENGINEER.
- THESE DRAWINGS AND SPECIFICATIONS ARE DESIGNED SOLELY FOR THE CLIENT AND THE PROPERTY INDICATED, AND SHALL NOT BE CONSTRUCTED FOR ANY OTHER CLIENT AND (OR) ON ANY OTHER PROPERTY.

SITE DATA

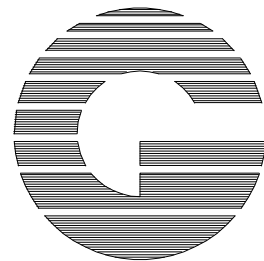
SITE AREA	5.02 ACRES (0.29 ACRES LEASED TO CHURCH)
# OF PARKING SPACES	38 SPACES
PAVED PLAY AREA	0.85 ACRES / 36,944 SQ. FEET
UNPAVED PLAY AREA	2.39 ACRES / 104,003 SQ. FEET
TOTAL PLAY AREA	3.24 ACRES / 140,947 SQ. FEET
BUILDING FOOTPRINT	29,153 SQ. FEET



ST. CLAIR CATHOLIC
DISTRICT SCHOOL BOARD
Lighting the Way - Rejoicing in Our Journey

420 CREEK STREET, WALLACEBURG, ONTARIO N8A 4C4

Stamp



T. W. GRAY & ASSOCIATES
ENGINEERING LIMITED

301 FRONT STREET N, SARNIA, ONTARIO N7T 5S6
PHONE: (519) 336-0486 FAX: (519) 336-5379

0	FOR REVIEW	06/07	B.K.	
No.	Revision	Date	By	

Plan

AS SHOWN

Design	T.W. GRAY
Drawn	B. KELCH
Checked	T.W. GRAY
Date	JUNE 2007

ST. BENEDICT CATHOLIC SCHOOL
975 OAK AVENUE , SARNIA, ONTARIO

Project No.

07-5203

Dwg File: 5203.SP

Drawing No.

SP

ST. MARGARET
720 Devine Street, Sarnia, N7T 1X2



FACILITY DETAIL

Building Age	1959, 1962, 1969	On The Ground Capacity	282
Gross Floor (sf)	>20 years 26,292 <20 years - Total 26,292	Enrolment (Oct'07)	136.5
Lot Area (acre)	3.66	% On The Ground Capacity	48.4
		Sep'07 Classrooms In Use	7
		Classrooms Vacant	5
		Classrooms Best Start *	0
		Total	12

RECAP DATA

Renewal Costs – 5 yrs	\$961,689
Renewal Costs – 10 yrs	\$1,704,302
Facility Condition Index (FCI)	23.16%

ANNUAL UTILITY COSTS

Electricity	\$19,317
Natural Gas	\$13,646
Water	\$1,856
Cost per sq ft	\$1.32

STUDENT TRANSPORTATION

# of Eligible Riders	56
Average Ride Time (min)	11
Maximum Ride Time (min)	22
# of Buses	3
Transportation Cost	\$27,693

PROJECTED ENROLMENT

	FTE	OTG Capacity
Oct 31, 2008	124.5	44.1%
Oct 31, 2009	119.0	42.2%
Oct 31, 2010	117.5	41.7%
Oct 31, 2011	115.5	41.0%
Oct 31, 2012	115.5	41.0%

SCHOOL STAFF (FTE)

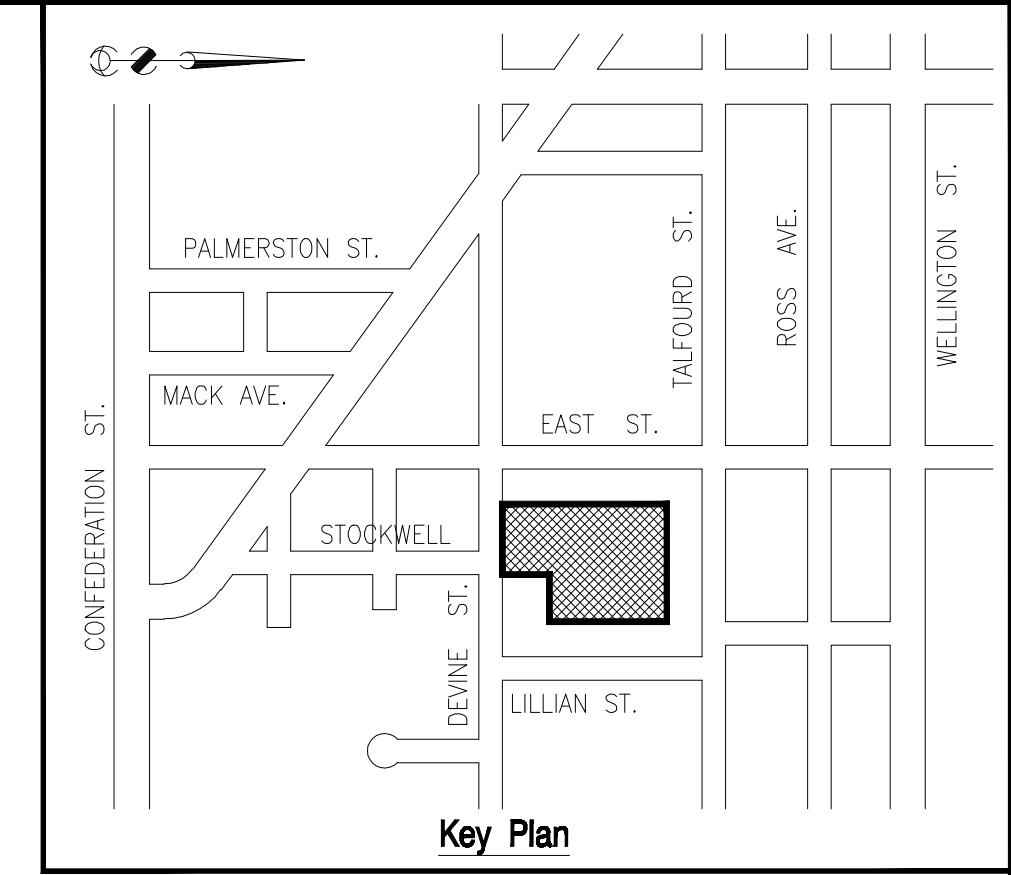
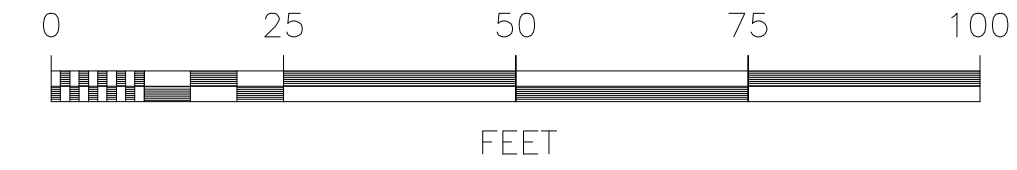
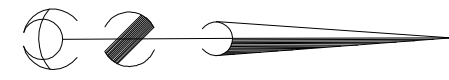
Principal/VP	1.0
Secretary	1.0
Custodian	1.3
Classroom Teachers	5.5
Resource Teachers	1.0
Itinerant Teachers	1.1
E.A.'s & Library Tech	3.3

* Classrooms leased by Daycare Providers are not included in OTG Capacity

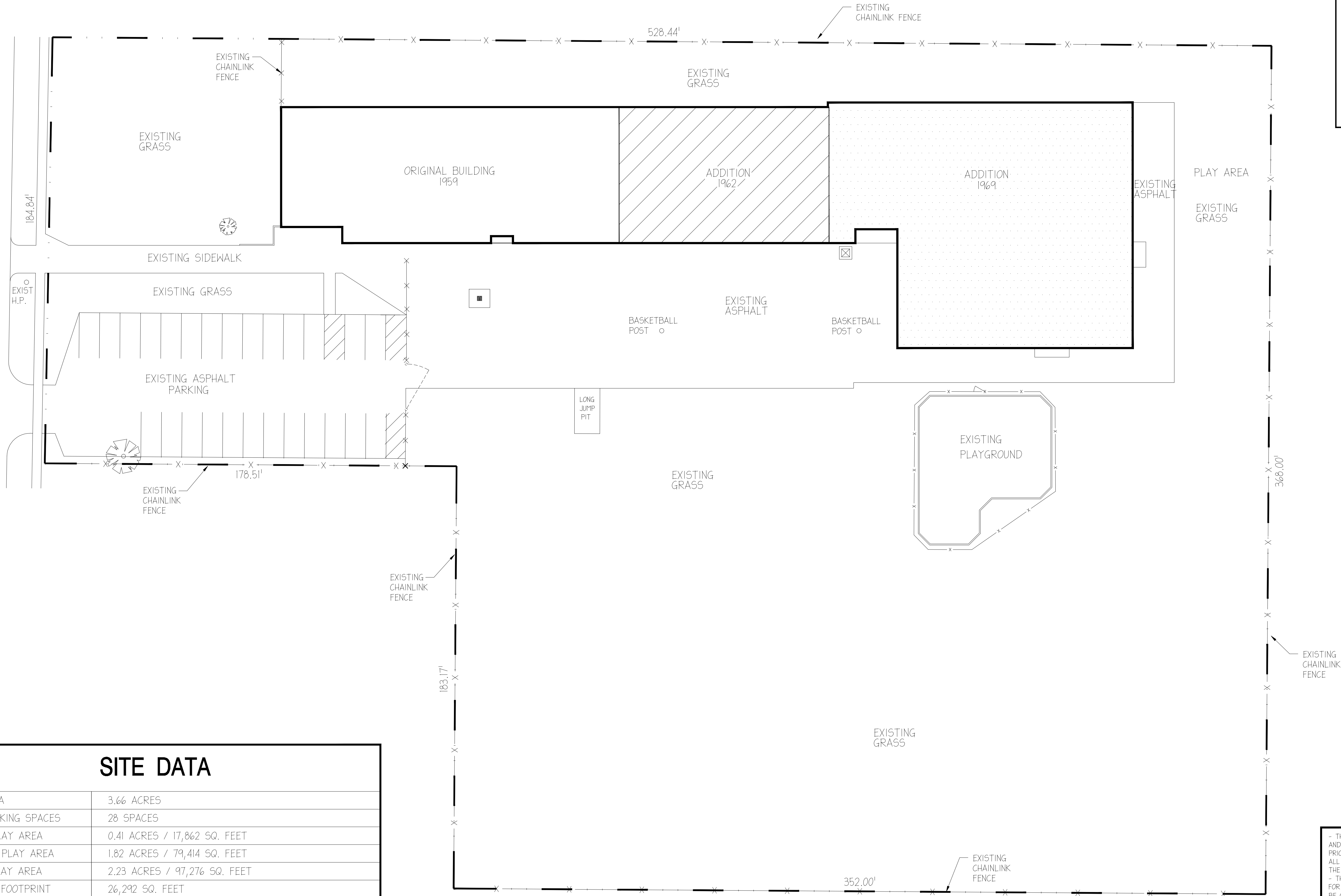
BOARD: ST. CLAIR CATHOLIC DISTRICT SCHOOL BOARD
 SCHOOL: **ST. MARGARET**

ENROLMENT BREAKDOWN:

		JK	SK	GR 1	GR 2	GR 3	GR 4	GR 5	GR 6	GR 7	GR 8	TOTAL	FTE
ACTUAL	October 31, 2002	12	22	15	19	24	23	17	26	27	19	204	187.00
	October 31, 2003	19	8	19	12	25	23	19	19	24	26	194	180.50
	October 31, 2004	7	21	8	18	12	24	24	20	22	27	183	169.00
	October 31, 2005	10	9	23	8	17	12	25	23	20	17	164	154.50
	October 31, 2006	9	9	8	23	8	16	15	24	25	18	155	146.00
	October 31, 2007	11	10	10	7	23	11	17	14	22	22	147	136.50
PROJECTED	October 31, 2008	11	12	10	10	7	25	12	16	14	19	136	124.50
	October 31, 2009	11	13	12	10	9	8	28	12	16	12	131	119.00
	October 31, 2010	11	12	13	12	10	10	8	27	12	14	129	117.50
	October 31, 2011	11	12	12	12	12	11	12	8	27	10	127	115.50
	October 31, 2012	11	12	13	12	12	13	12	11	8	23	127	115.50



DEVINE STREET



SITE DATA

SITE AREA	3.66 ACRES
# OF PARKING SPACES	28 SPACES
PAVED PLAY AREA	0.41 ACRES / 17,862 SQ. FEET
UNPAVED PLAY AREA	1.82 ACRES / 79,414 SQ. FEET
TOTAL PLAY AREA	2.23 ACRES / 97,276 SQ. FEET
BUILDING FOOTPRINT	26,292 SQ. FEET

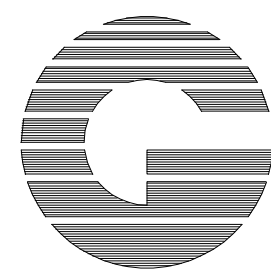
- THE CONTRACTOR SHALL CHECK AND VERIFY ALL DIMENSIONS AND REPORT ANY ERRORS OR OMISSIONS TO THE ENGINEER PRIOR TO PROCEEDING WITH ANY WORK ON THIS PROJECT. ALL DRAWINGS AND SPECIFICATIONS ARE THE PROPERTY OF THE ENGINEER.
- THESE DRAWINGS AND SPECIFICATIONS ARE DESIGNED SOLELY FOR THE CLIENT AND THE PROPERTY INDICATED, AND SHALL NOT BE CONSTRUCTED FOR ANY OTHER CLIENT AND (OR) ON ANY OTHER PROPERTY.



**ST. CLAIR CATHOLIC
DISTRICT SCHOOL BOARD**
Lighting the Way - Rejoicing in Our Journey

420 CREEK STREET, WALLACEBURG, ONTARIO N8A 4C4

Stamp



**T. W. GRAY & ASSOCIATES
ENGINEERING LIMITED**

301 FRONT STREET N, SARNIA, ONTARIO N7T 5S6
PHONE: (519) 336-0486 FAX: (519) 336-5379

0	FOR REVIEW	07/07	B.K.		
No.	Revision	Date	By		

Plan

AS SHOWN

Design	T.W. GRAY
Drawn	B. KELCH
Checked	T.W. GRAY
Date	JULY 2007

ST. MARGARET CATHOLIC SCHOOL
720 DEVINE STREET, SARNIA, ONTARIO

Project No.

07-5203

Dwg File: 5203 SP

Drawing No.

SP

ST. PETER
696 Oxford Street, Sarnia, N7T 6Z8



FACILITY DETAIL

Building Age	1948, 1952, 1954, 1964, 1969	On The Ground Capacity	408
Gross Floor (sf)	>20 years 38,508 <20 years - Total 38,508	Enrolment (Oct'07)	236
Lot Area (acre)	2.34	% On The Ground Capacity	57.8
		Sep'07 Classrooms In Use	11
		Classrooms Vacant	7
		Classrooms Best Start *	0
		Total	18

RECAP DATA

Renewal Costs – 5 yrs	\$2,701,084
Renewal Costs – 10 yrs	\$3,149,071
Facility Condition Index (FCI)	45.33%

ANNUAL UTILITY COSTS

Electricity	\$34,906
Natural Gas	\$19,442
Water	\$3,550
Cost per sq ft	\$1.50

STUDENT TRANSPORTATION

# of Eligible Riders	91
Average Ride Time (min)	14
Maximum Ride Time (min)	50
# of Buses	3
Transportation Cost	\$43,345

PROJECTED ENROLMENT

	FTE	OTG Capacity
Oct 31, 2008	223.5	54.8%
Oct 31, 2009	219.0	53.7%
Oct 31, 2010	221.5	54.3%
Oct 31, 2011	214.0	52.5%
Oct 31, 2012	219.0	53.7%

SCHOOL STAFF (FTE)

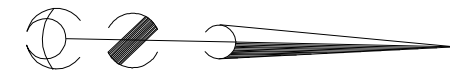
Principal/VP	1.0
Secretary	1.0
Custodian	2.0
Classroom Teachers	10.5
Resource Teachers	1.5
Itinerant Teachers	1.7
E.A.'s & Library Tech	6.8

* Classrooms leased by Daycare Providers are not included in OTG Capacity

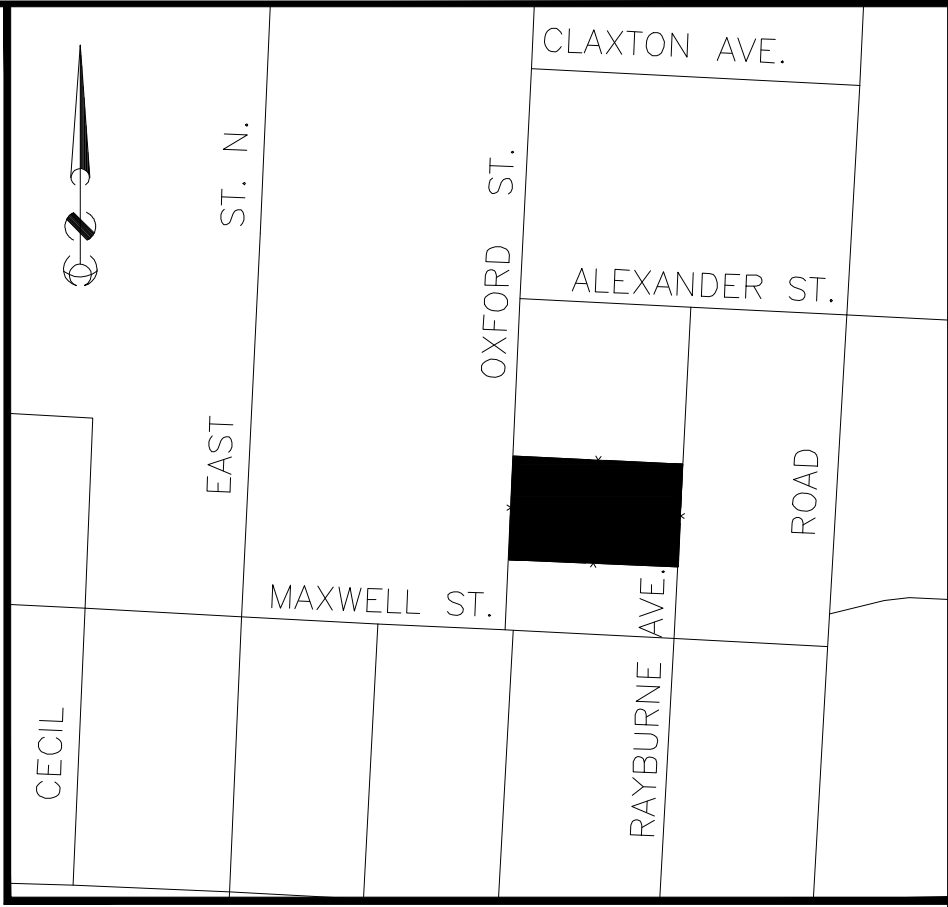
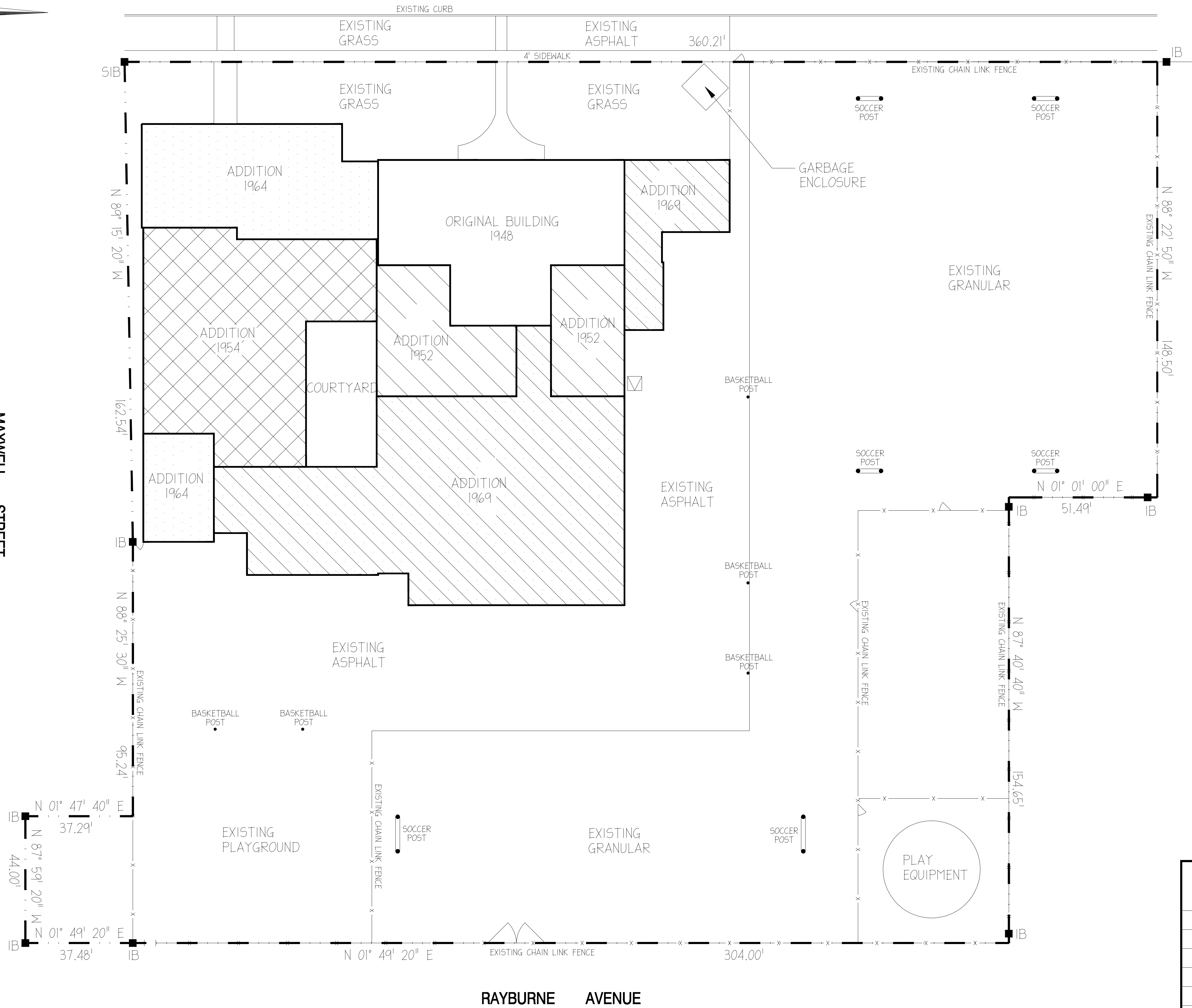
BOARD: ST. CLAIR CATHOLIC DISTRICT SCHOOL BOARD
 SCHOOL: **ST. PETER SARNIA**

ENROLMENT BREAKDOWN:

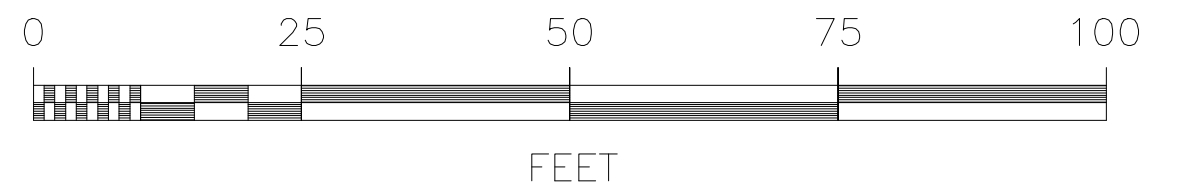
		JK	SK	GR 1	GR 2	GR 3	GR 4	GR 5	GR 6	GR 7	GR 8	TOTAL	FTE
ACTUAL	October 31, 2002	31	37	36	43	39	40	40	47	46	62	421	387.00
	October 31, 2003	28	25	38	37	37	31	38	38	44	41	357	330.50
	October 31, 2004	31	26	20	32	32	31	27	36	36	37	308	279.50
	October 31, 2005	21	29	26	20	29	31	30	31	35	36	288	263.00
	October 31, 2006	15	22	32	22	21	29	31	30	32	35	269	250.50
	October 31, 2007	23	19	25	31	22	21	31	25	25	35	257	236.00
PROJECTED	October 31, 2008	24	25	21	23	31	22	21	31	24	26	248	223.50
	October 31, 2009	22	26	27	19	23	30	22	21	29	24	243	219.00
	October 31, 2010	23	24	28	25	19	23	31	22	20	30	245	221.50
	October 31, 2011	23	25	26	26	25	19	23	30	21	20	238	214.00
	October 31, 2012	23	25	27	25	26	25	19	23	29	21	243	219.00



MAXWELL STREET



KEY PLAN
N.T.S.



THE PROPERTY SURVEY ON THIS DRAWING WAS COMPLETED ON DEC. 11TH, 2003 BY MONTEITH AND SUTHERLAND LIMITED 2109 LONDON LINE SARNIA, ONTARIO N7T 7H2 TEL. (519) 542-4300

- THE CONTRACTOR SHALL CHECK AND VERIFY ALL DIMENSIONS AND REPORT ANY ERRORS OR OMISSIONS TO THE ENGINEER PRIOR TO PROCEEDING WITH ANY WORK ON THIS PROJECT. ALL DRAWINGS AND SPECIFICATIONS ARE THE PROPERTY OF THE ENGINEER.
- THESE DRAWINGS AND SPECIFICATIONS ARE DESIGNED SOLELY FOR THE CLIENT AND THE PROPERTY INDICATED, AND SHALL NOT BE CONSTRUCTED FOR ANY OTHER CLIENT AND (OR) ON ANY OTHER PROPERTY.

SITE DATA

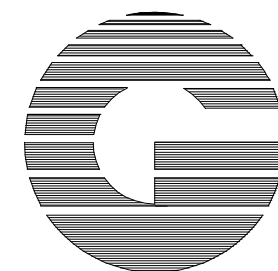
SITE AREA	2.34 ACRES
# OF PARKING SPACES	0 SPACES ON-SITE (AVAILABLE PARKING OFF-SITE)
PAVED PLAY AREA	0.51 ACRES / 22,307 SQ. FEET
UNPAVED PLAY AREA	1.03 ACRES / 44,671 SQ. FEET
TOTAL PLAY AREA	1.54 ACRES / 66,978 SQ. FEET
BUILDING FOOTPRINT	26,662 SQ. FEET



**ST. CLAIR CATHOLIC
DISTRICT SCHOOL BOARD**
Lighting the Way - Rejoicing in Our Journey

420 CREEK STREET, WALLACEBURG, ONTARIO N8A 4C4

Stamp



**T.W. GRAY & ASSOCIATES
ENGINEERING LIMITED**

301 FRONT STREET NORTH, SARNIA, ONTARIO N7T 5S6
PHONE: (519) 336-0486 FAX: (519) 336-5379

0	FOR REVIEW	07/07	B.K.		
No.	Revision	Date	By		

Scale
AS SHOWN

Design	T.W. GRAY
Drawn	B. KELCH
Checked	T.W. GRAY
Date	JULY 2007

ST. PETER CATHOLIC SCHOOL
696 OXFORD STREET, SARNIA, ONTARIO

Project No.
07-5203
Dwg File: 5203 SP
Drawing No.
SP

ST. THERESE
558 Bright Street, Sarnia, N7T 4G7



FACILITY DETAIL

Building Age	1954, 1958, 1961, 1965, 1970, 1979	On The Ground Capacity	478
		Enrolment (Oct'07)	319
Gross Floor (sf)	>20 years 45,417 <20 years - Total 45,417	% On The Ground Capacity	66.7
Lot Area (acre)	5.23	Sep'07 Classrooms In Use	14
		Classrooms Vacant	6
		Classrooms Best Start *	2
		Total	22

RECAP DATA

Renewal Costs – 5 yrs	\$1,742,716
Renewal Costs – 10 yrs	\$2,968,240
Facility Condition Index (FCI)	21.64%

ANNUAL UTILITY COSTS

Electricity	\$49,724
Natural Gas	\$12,001
Water	\$4,906
Cost per sq ft	\$1.47

STUDENT TRANSPORTATION

# of Eligible Riders	223
Average Ride Time (min)	9
Maximum Ride Time (min)	17
# of Buses	7
Transportation Cost	\$135,596

PROJECTED ENROLMENT

	FTE	OTG Capacity
Oct 31, 2008	293.0	61.3%
Oct 31, 2009	274.0	57.3%
Oct 31, 2010	256.5	53.7%
Oct 31, 2011	247.0	51.7%
Oct 31, 2012	235.0	49.2%

SCHOOL STAFF (FTE)

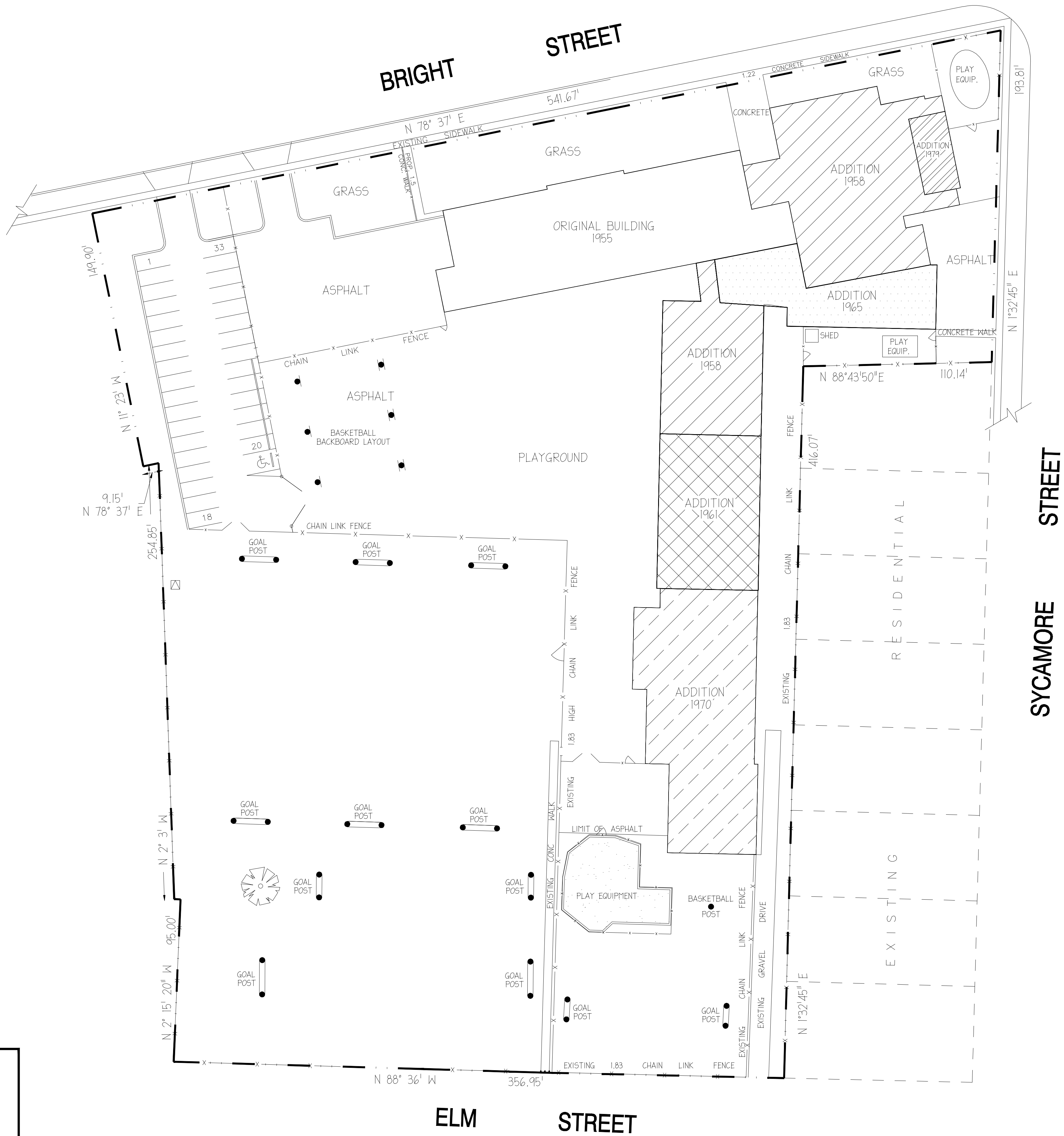
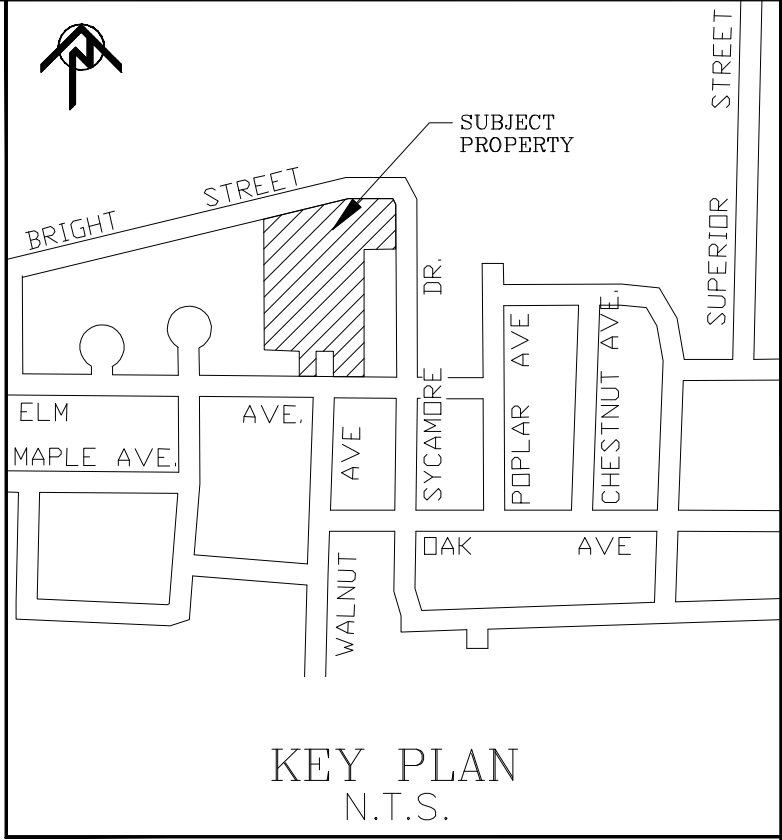
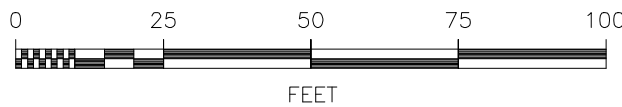
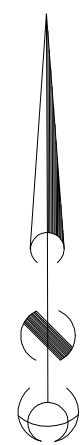
Principal/VP	1.3
Secretary	1.5
Custodian	2.5
Classroom Teachers	13.5
Resource Teachers	1.5
Itinerant Teachers	2.3
E.A.'s & Library Tech	7.1

* Classrooms leased by Daycare Providers are not included in OTG Capacity

BOARD: ST. CLAIR CATHOLIC DISTRICT SCHOOL BOARD
 SCHOOL: **ST. THERESE**

ENROLMENT BREAKDOWN:

		JK	SK	GR 1	GR 2	GR 3	GR 4	GR 5	GR 6	GR 7	GR 8	TOTAL	FTE
ACTUAL	October 31, 2002	48	40	47	49	58	41	61	55	43	62	504	460.00
	October 31, 2003	39	52	48	46	50	58	51	64	58	43	509	463.50
	October 31, 2004	27	35	42	39	37	44	57	53	61	55	450	419.00
	October 31, 2005	24	25	35	38	34	40	45	54	43	60	398	373.50
	October 31, 2006	36	31	24	33	39	34	35	39	45	40	356	322.50
	October 31, 2007	26	34	33	21	33	41	34	41	38	48	349	319.00
PROJECTED	October 31, 2008	27	27	34	30	20	34	40	34	36	38	320	293.00
	October 31, 2009	25	29	28	31	29	21	33	39	30	36	301	274.00
	October 31, 2010	26	27	29	25	30	30	20	33	34	29	283	256.50
	October 31, 2011	26	28	27	26	24	31	29	20	29	34	274	247.00
	October 31, 2012	26	28	28	24	25	25	30	29	18	29	262	235.00



THE PROPERTY SURVEY ON THIS DRAWING WAS COMPLETED ON OCT 29TH, 1998 BY MONTEITH AND SUTHERLAND LIMITED 2109 LONDON LINE SARNIA, ONTARIO N7T 7H2 TEL. (519) 542-4300

- THE CONTRACTOR SHALL CHECK AND VERIFY ALL DIMENSIONS AND REPORT ANY ERRORS OR OMISSIONS TO THE ENGINEER PRIOR TO PROCEEDING WITH ANY WORK ON THIS PROJECT. ALL DRAWINGS AND SPECIFICATIONS ARE THE PROPERTY OF THE ENGINEER.
- THESE DRAWINGS AND SPECIFICATIONS ARE DESIGNED SOLELY FOR THE CLIENT AND THE PROPERTY INDICATED, AND SHALL NOT BE CONSTRUCTED FOR ANY OTHER CLIENT AND (OR) ON ANY OTHER PROPERTY.

SITE DATA

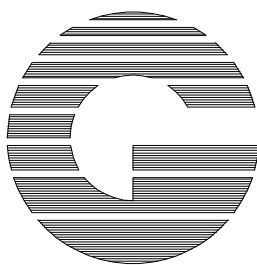
SITE AREA	5.23 ACRES
# OF PARKING SPACES	33 SPACES
PAVED PLAY AREA	1.07 ACRES / 46,790 SQ. FEET
UNPAVED PLAY AREA	2.53 ACRES / 156,843 SQ. FEET
TOTAL PLAY AREA	3.60 ACRES / 156,843 SQ. FEET
BUILDING FOOTPRINT	41,832 SQ. FEET



ST. CLAIR CATHOLIC DISTRICT SCHOOL BOARD
Lighting the Way - Rejoicing in Our Journey

420 CREEK STREET, WALLACEBURG, ONTARIO N8A 4C4

Stamp



T. W. GRAY & ASSOCIATES
ENGINEERING LIMITED

301 FRONT STREET N, SARNIA, ONTARIO N7T 5S6
PHONE: (519) 336-0486 FAX: (519) 336-5379

0	FOR REVIEW	07/07	B.K.		
No.	Revision	Date	By		

Plan

AS SHOWN

Design	T.W. GRAY
Drawn	B. KELCH
Checked	T.W. GRAY
Date	JULY 2007

ST. THERESE CATHOLIC SCHOOL
559 BRIGHT STREET, SARNIA, ONTARIO

Project No.

07-5203

Dwg File: 5203 SP

Drawing No.

SP