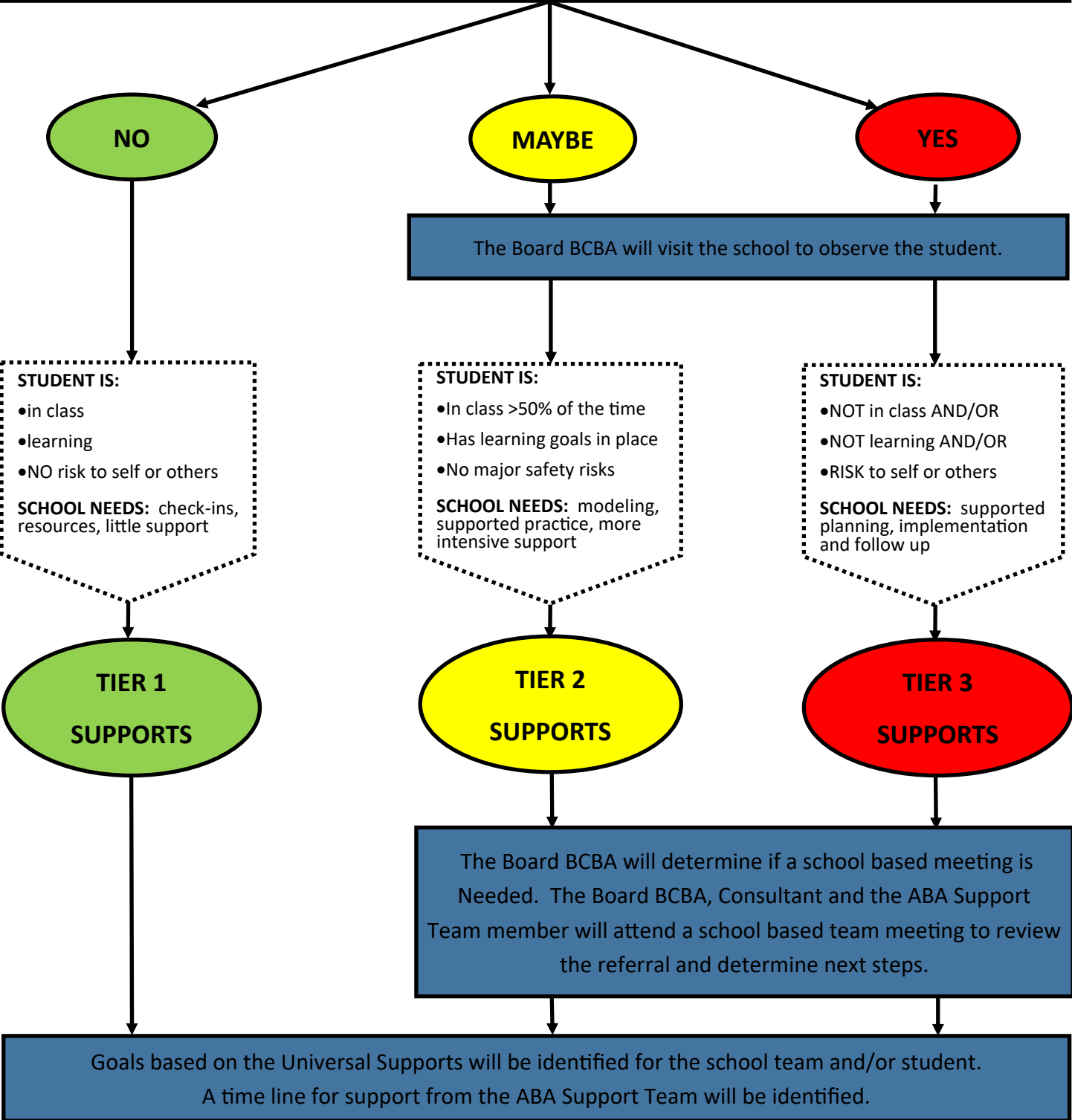


# Identifying Students Who Require UNIVERSAL SUPPORTS

IF the student is NOT currently identified by the ABA Support Team (i.e. new student, new behaviours, new learning needs), the School Team will complete an electronic referral package for ABA services and submit it to the Autism Consultant (Sara Vadovic).

## Is SAFETY, LEARNING or INCLUSION at RISK?



# Implementing Universal Supports Goal(s)

The Board BCBA, in collaboration with the ABA Support Team, will develop a plan to address the goal(s) in the school-

**TIER 1  
SUPPORTS**

**TIER 2  
SUPPORTS**

**TIER 3  
SUPPORTS**

The Board BCBA will determine if training for the school team is required to meet the goal(s).

A half-day of release and training will be provided for PRT, CT, EA and other relevant team members for ALL Tier 3 students and for Tier 2 students as determined by the Board BCBA.

The plan for addressing the Universal Supports Goal(s) will be communicated to the relevant school members.

An ABA Support Team member will teach, model, and support the implementation of the goal(s) in the school.

**HOW:** Consultation

- Check in
- Provide resources
- Assist with planning next steps

**WHO:** ABA Support Team  
Itinerant EA

**DURATION:** half day

**HOW:** Coaching/Feedback

- Coaching/Model strategies
- Provide feedback
- Fade support with success

**WHO:** ABA Support Team  
Itinerant EA, Consultant and/  
or BCBA as needed

**DURATION:** 1-5 days

**HOW:** BST model

- Provide planned intervention while staff observe (staff support)
- Generalize to staff (consultant supports)
- Fade support with success

**WHO:** ABA Support Team  
Itinerant EA, Consultant  
and/or BCBA as needed

**DURATION:** TBD based on goals

The ABA Support Team member will leave the school to go to the next school. A follow up date will be set.

The implementation of the goal will be evaluated to determine if revision is necessary, or if a next goal is required.