

Boundary Review Committee

St. Anne Catholic School, Sarnia

&

St. Michael Catholic School,

Bright's Grove

January 17, 2012

7:00 pm



**ST. CLAIR CATHOLIC
DISTRICT SCHOOL BOARD**

Lighting the Way ~ Rejoicing in Our Journey

Opening Prayer

Let us pray in the name of the Father,
and of the Son, and of the Holy Spirit. Amen.

God of Unity, we give you thanks for the opportunity to gather,
and for calling us to the privilege of this meeting.

Encircle our schools with Your love.
Help us to honour our past, respect our present,
and look to the future with courage and faith.

May our discussions and decisions be focused
on the well-being of your children;
those you have entrusted to our care.

Help us to be open to the guidance and influence
of your Holy Spirit, as we do our best to live like Jesus.

We make our prayer in the name of the Father,
and of the Son, and of the Holy Spirit. Amen.



ST. CLAIR CATHOLIC
DISTRICT SCHOOL BOARD

Lighting the Way ~ Rejoicing in Our Journey

Review of Policy 7.4

Student Accommodation & Boundary *Policy Statement:*

The St. Clair Catholic District School Board is committed to provide student accommodation in a responsible and organized manner, and to consult with the community.



ST. CLAIR CATHOLIC
DISTRICT SCHOOL BOARD

Lighting the Way ~ Rejoicing in Our Journey

Policy Goals:

The St. Clair Catholic District School Board acknowledges that the consolidation or closure of a school or schools and/or the revision of boundaries may be required in order to operate in an efficient and effective manner.

The Board shall:

- a) provide a Catholic school system where the life and gospel of Christ are integrated into the entire curriculum and to seek a spirit of co-operation between the home, the school, and the Church;
- b) provide adequate and appropriate accommodation for the students attending its schools pursuant to Ministry Guidelines and Regulations;



**ST. CLAIR CATHOLIC
DISTRICT SCHOOL BOARD**

Lighting the Way ~ Rejoicing in Our Journey

Policy Goals continued ...

- c) provide effective educational programs for all students through the efficient management of the Board's resources;
- d) communicate with parents and community concerning possible changes in the status of a school or schools or of the boundaries of a school or schools.



ST. CLAIR CATHOLIC
DISTRICT SCHOOL BOARD

Lighting the Way ~ Rejoicing in Our Journey

Committee Mandate

- The BRC is appointed by the Board and is authorized to make recommendations as per board policy.
- The written recommendations of the BRC will be delivered to the Director of Education who will make them known to the Board of Trustees at a public meeting.
- While the BRC's establishment was triggered by the present circumstances, the future must be a primary component in considering the actions the BRC will recommend.



ST. CLAIR CATHOLIC
DISTRICT SCHOOL BOARD

Lighting the Way ~ Rejoicing in Our Journey

Committee Mandate Continued

- The BRC is encouraged, but not required, to come to consensus with respect to its recommendation(s).
- At all times the BRC should maintain its focus on the issue at hand and not allow itself to become distracted by side issues.
- The BRC will meet a minimum of two times.
- The Trustees will give the BRC's recommendations due consideration and they will decide on a course of action that best serves the needs of the Board.



ST. CLAIR CATHOLIC
DISTRICT SCHOOL BOARD

Lighting the Way ~ Rejoicing in Our Journey

Rules of Order

1. Protocol for Meeting
2. Questions



ST. CLAIR CATHOLIC
DISTRICT SCHOOL BOARD

Lighting the Way ~ Rejoicing in Our Journey

Background Information

- St. Anne is currently operating at capacity with classes that are larger than the average class sizes for the Board. Growth in the area may further exaggerate this problem.
- Implementation of full-day kindergarten (FDK) in 2014 will also increase the classroom requirements at St. Anne Catholic School.
- Due to declining enrolment and decreased participation rates at St. Michael Bright's Grove, there has been a significant enrolment decline at St. Michael Catholic School.



ST. CLAIR CATHOLIC
DISTRICT SCHOOL BOARD

Lighting the Way ~ Rejoicing in Our Journey

Review of Notes and Follow-up From November 15th Meeting

- Day Care
- School Start Time
- Declining Participation Rate at St. Michael Bright's Grove



ST. CLAIR CATHOLIC
DISTRICT SCHOOL BOARD

Lighting the Way ~ Rejoicing in Our Journey

Review Impact of Study Areas 2 and 3



ST. CLAIR CATHOLIC
DISTRICT SCHOOL BOARD

Lighting the Way ~ Rejoicing in Our Journey

Impact of Study Areas 2 and 3

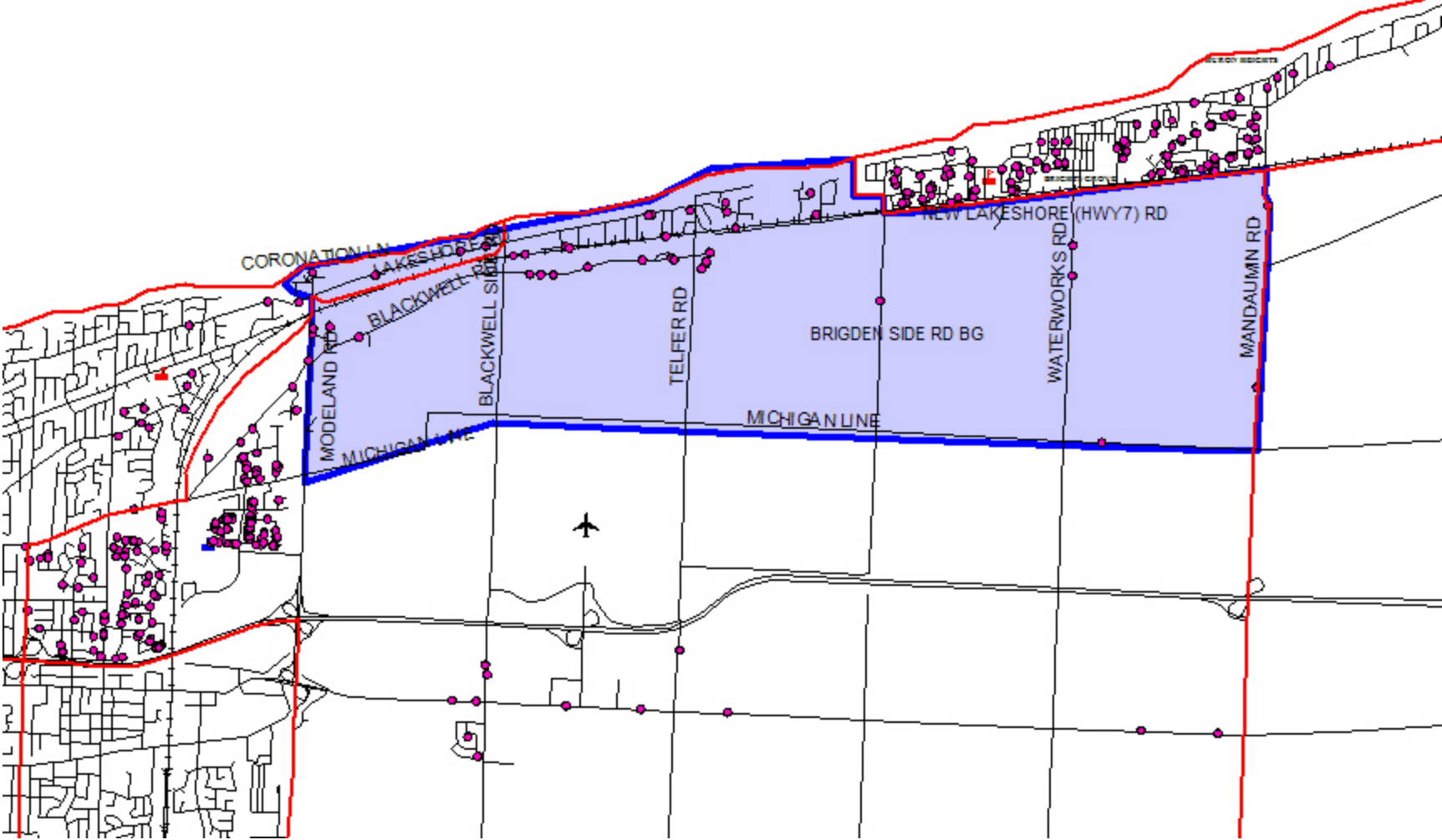
- Transfer students residing in Study Areas 2 and 3 from St. Anne Catholic School effective September 2012, with the exception of current grade 6 and 7 students, who would be grandfathered at St. Anne.
- Students from Study Area 2 would attend St. Michael Bright's Grove.
- Students from Study Area 3 would attend Sacred Heart, Sarnia.



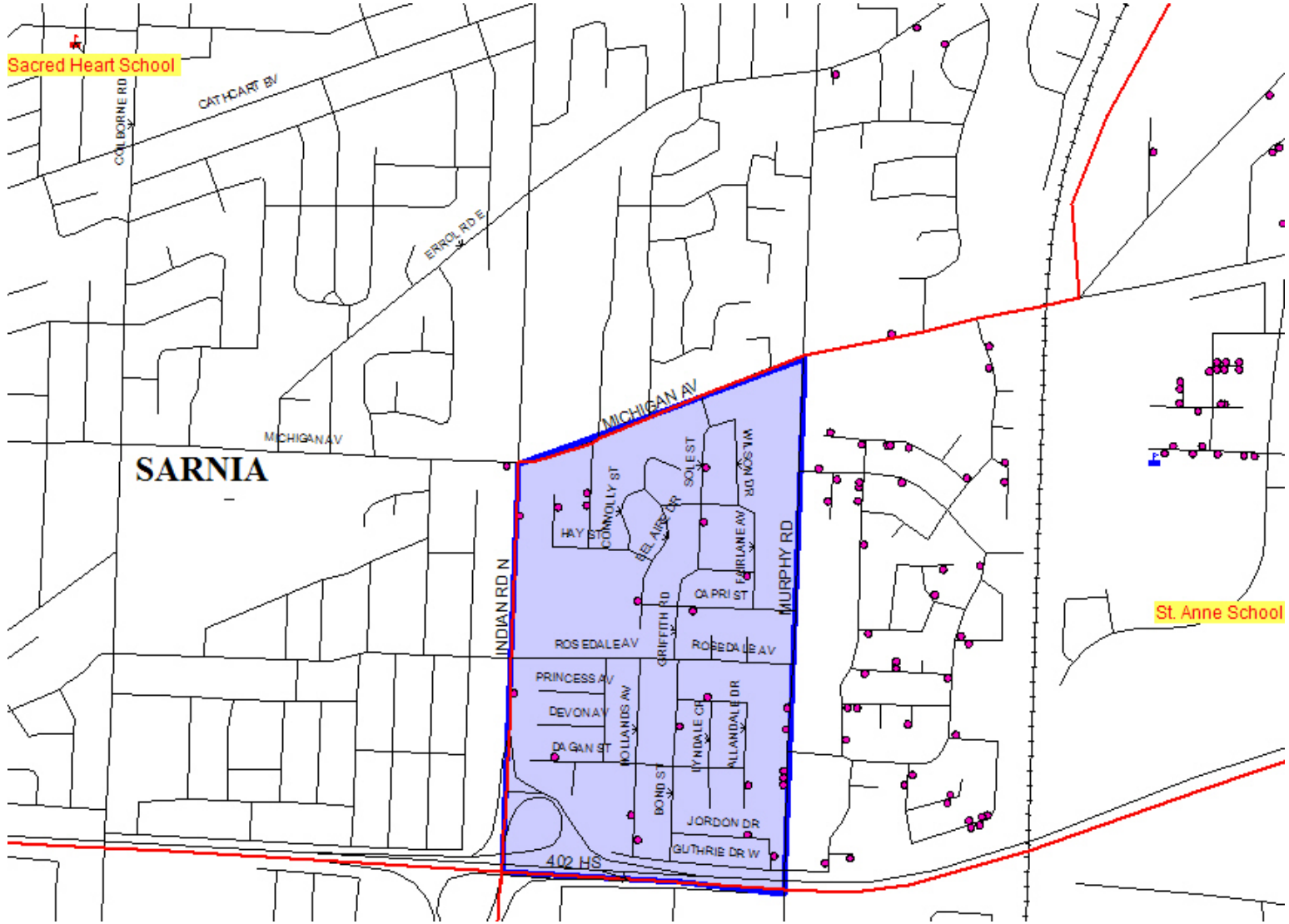
ST. CLAIR CATHOLIC
DISTRICT SCHOOL BOARD

Lighting the Way ~ Rejoicing in Our Journey

Study Area 2



Study Area 3



**Current Students by Grade
Residing Within Study Areas 2 and 3**

| GRADE | JK | SK | 1 | 2 | 3 | 4 | 5 | 6 | 7 | 8 |
|---------------|-----------|-----------|----------|----------|----------|----------|----------|-----------|-----------|-----------|
| Area 2 | 4 | 5 | 5 | 5 | 3 | 4 | 3 | 9 | 10 | 8 |
| Area 3 | 4 | 3 | 3 | 4 | 3 | 5 | 4 | 5 | 4 | 4 |
| TOTALS | 8 | 8 | 8 | 9 | 6 | 9 | 7 | 14 | 14 | 12 |

Total Students JK to Grade 5 - 55

**Study Area 2 – Proposed Students to be Transferred
from St. Anne to St. Michael Brights Grove**

| GRADE | JK | SK | 1 | 2 | 3 | 4 | 5 | TOTAL |
|--------------|-----------|-----------|----------|----------|----------|----------|----------|--------------|
| Area 2 | 4 | 5 | 5 | 5 | 3 | 4 | 3 | 29 |

**Study Area 3 – Proposed Students to be Transferred
from St. Anne to Sacred Heart, Sarnia**

| GRADE | JK | SK | 1 | 2 | 3 | 4 | 5 | TOTAL |
|--------------|-----------|-----------|----------|----------|----------|----------|----------|--------------|
| Area 3 | 4 | 3 | 3 | 4 | 3 | 5 | 4 | 26 |

Study Areas 2 and 3
Impact on St. Anne, Sarnia (OTG 308.00)
Enrolment Projections by Grade

| | JK | SK | 1 | 2 | 3 | 4 | 5 | 6 | 7 | 8 | TOTAL | FTE | Projections with No Change |
|-------------|-----------|-----------|----------|----------|----------|----------|----------|----------|----------|----------|--------------|------------|---|
| 2012 | 30 | 23 | 28 | 19 | 21 | 23 | 22 | 14 | 48 | 47 | 275 | 248.50 | 303.50 |
| 2013 | 27 | 30 | 23 | 28 | 19 | 21 | 23 | 22 | 14 | 48 | 255 | 226.50 | 289.50 |
| 2014 | 27 | 27 | 30 | 23 | 28 | 19 | 21 | 23 | 22 | 14 | 234 | 234.00 | 313.00 |
| 2015 | 27 | 27 | 27 | 30 | 23 | 28 | 19 | 21 | 23 | 22 | 247 | 247.00 | 327.00 |
| 2016 | 28 | 27 | 27 | 27 | 30 | 23 | 28 | 19 | 21 | 23 | 253 | 253.00 | 332.00 |

Study Area 2
Impact on St. Michael, Bright's Grove (OTG 316.00)
Enrolment Projections by Grade

| | JK | SK | 1 | 2 | 3 | 4 | 5 | 6 | 7 | 8 | TOTAL | FTE | Projections with No Change |
|-------------|----|----|----|----|----|----|----|----|----|----|-------|--------|----------------------------------|
| 2012 | 17 | 12 | 19 | 17 | 33 | 20 | 28 | 37 | 22 | 26 | 231 | 216.50 | 187.00 |
| 2013 | 15 | 18 | 12 | 18 | 17 | 34 | 20 | 28 | 37 | 22 | 221 | 221.00 | 182.00 |
| 2014 | 16 | 16 | 18 | 12 | 18 | 18 | 34 | 20 | 28 | 38 | 218 | 218.00 | 173.00 |
| 2015 | 16 | 17 | 16 | 17 | 12 | 19 | 18 | 34 | 20 | 28 | 197 | 197.00 | 150.00 |
| 2016 | 16 | 17 | 17 | 15 | 17 | 12 | 19 | 18 | 34 | 20 | 185 | 185.00 | 138.00 |

Study Area 3
Impact on Sacred Heart, Sarnia (OTG 374.00)
Enrolment Projections by Grade

| | JK | SK | 1 | 2 | 3 | 4 | 5 | 6 | 7 | 8 | TOTAL | FTE | Projections with No Change |
|-------------|----|----|----|----|----|----|----|----|----|----|-------|--------|----------------------------|
| 2012 | 25 | 33 | 29 | 32 | 27 | 33 | 35 | 39 | 28 | 32 | 313 | 313.00 | 284.00 |
| 2013 | 28 | 29 | 35 | 30 | 34 | 28 | 34 | 36 | 37 | 27 | 318 | 318.00 | 283.00 |
| 2014 | 27 | 32 | 30 | 36 | 31 | 34 | 28 | 34 | 34 | 36 | 322 | 322.00 | 287.00 |
| 2015 | 28 | 31 | 34 | 32 | 38 | 32 | 35 | 28 | 33 | 34 | 325 | 325.00 | 285.00 |
| 2016 | 28 | 32 | 33 | 35 | 33 | 39 | 32 | 35 | 27 | 32 | 326 | 326.00 | 291.00 |

Discussion



ST. CLAIR CATHOLIC
DISTRICT SCHOOL BOARD

Lighting the Way ~ Rejoicing in Our Journey

Consideration of Study Area 4



ST. CLAIR CATHOLIC
DISTRICT SCHOOL BOARD

Lighting the Way ~ Rejoicing in Our Journey

Study Area 4

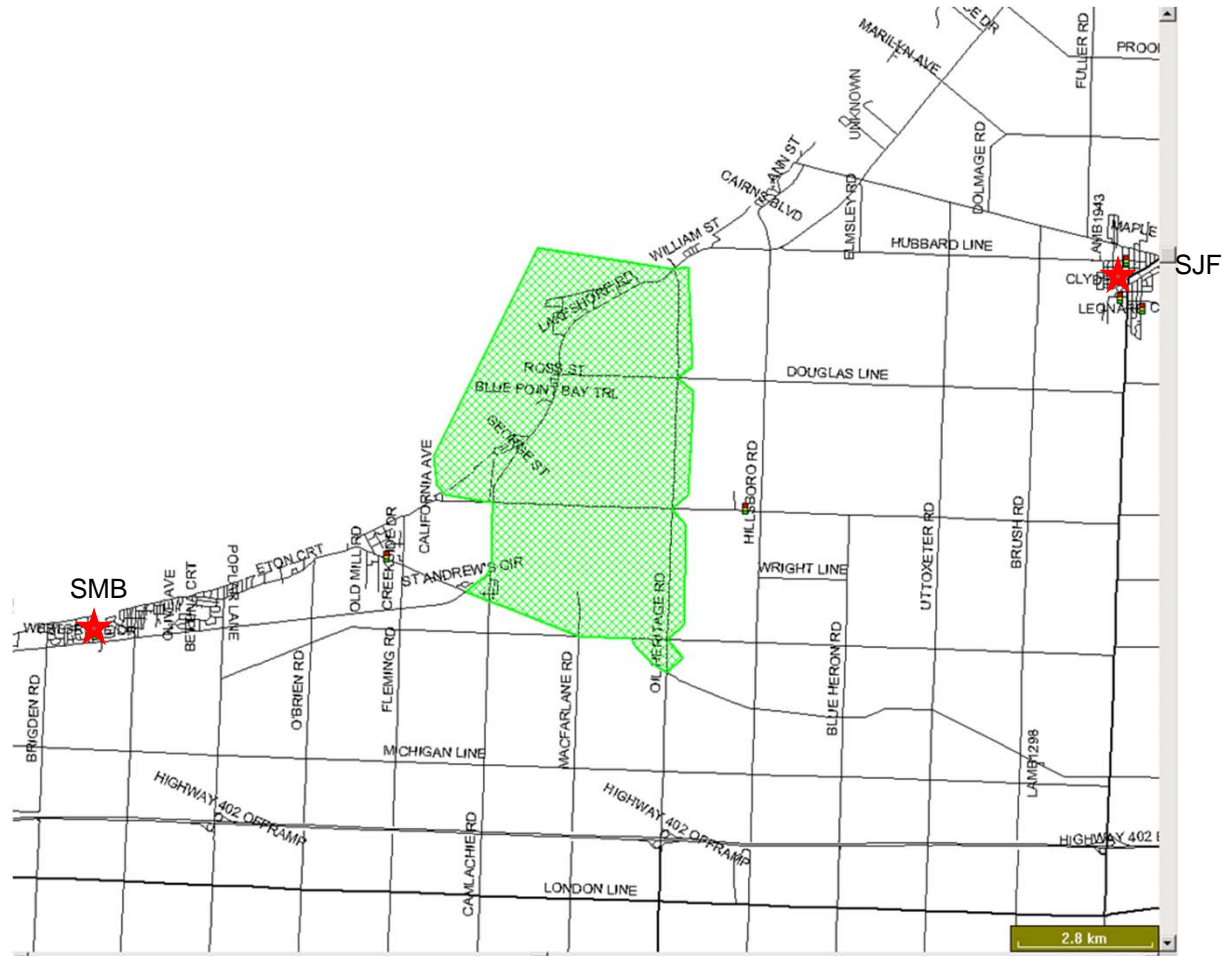
- Transfer students residing in Study Area 4 from St. John Fisher Catholic School in Forest, to St. Michael Catholic School in Bright's Grove effective September 2012. Current grade 6 and 7 students would be grandfathered at St. John Fisher.



ST. CLAIR CATHOLIC
DISTRICT SCHOOL BOARD

Lighting the Way ~ Rejoicing in Our Journey

Study Area 4 – Bluepoint / Camlachie



Study Area 4
Proposed Students to be Transferred from
St. John Fisher, Forest to St. Michael BG

| GRADE | JK | SK | 1 | 2 | 3 | 4 | 5 | TOTAL |
|--------------|-----------|-----------|----------|----------|----------|----------|----------|--------------|
| Area 4 | 1 | 4 | 1 | 1 | 1 | 4 | 4 | 16 |

Discussion



ST. CLAIR CATHOLIC
DISTRICT SCHOOL BOARD

Lighting the Way ~ Rejoicing in Our Journey

Question Period



ST. CLAIR CATHOLIC
DISTRICT SCHOOL BOARD

Lighting the Way ~ Rejoicing in Our Journey

Next Meeting:

Tuesday, March 6, 2012



**ST. CLAIR CATHOLIC
DISTRICT SCHOOL BOARD**

Lighting the Way ~ Rejoicing in Our Journey

Closing Prayer

God of All,
surrounded by your love,
we have prayed together,
and listened to your Word through the Scriptures
and spoken through each person.

May the work we have done tonight
be a witness to our commitment to Catholic Education.

May our journeys home be safe
and our time with family be peace-filled.

We ask your blessing upon all that has taken place tonight,
and upon us as we pray in the name of the Father,
and of the Son, and of the Holy Spirit. Amen.



ST. CLAIR CATHOLIC
DISTRICT SCHOOL BOARD

Lighting the Way ~ Rejoicing in Our Journey