

# St. Clair Catholic District School Board

Accommodation Review Committee  
St. Patrick's & St. Christopher  
Strategic Level Demographics Profile



November 2008

**Table 1**  
**Sarnia, Lambton & Ontario Population Size & Change**

	<b>1996</b>	<b>2001</b>	<b>2006</b>	<b>% Change</b>	<b># Change</b>
Sarnia	72,738	70,876	71,419	-1.8	-1,319
Lambton County	56,237	56,095	56,785	1.0	548
<b>TOTAL</b>	<b>128,975</b>	<b>126,971</b>	<b>128,204</b>	<b>-0.6</b>	<b>-771</b>
Ontario	10,753,575	11,410,050	12,160,285	13.1	1,406,710

*Source: Census Canada*

**Table 2**  
**Sarnia Age & Gender Profile**

	1996		2001		2006		1996 to 2006 # Change
	#	%	#	%	#	%	
0 to 4 years	4,655	6.4	3,560	5.0	3,330	4.7	-1,325
5 to 14 years	10,150	14.0	9,320	13.1	8,100	11.3	-2,050
15 to 19 years	5,035	6.9	5,130	7.2	5,115	7.2	80
20 to 24 years	4,655	6.4	4,295	6.1	4,740	6.6	85
25 to 54 years	30,440	41.8	29,245	41.3	28,185	39.5	-2,255
55 to 64 years	6,855	9.4	7,380	10.4	9,195	12.9	2,340
65 to 74 years	6,625	9.1	6,560	9.3	6,300	8.8	-325
75+ years	4,325	5.9	5,380	7.6	6,455	9.0	2,130
<b>TOTAL</b>	<b>72,740</b>	<b>100.0</b>	<b>70,870</b>	<b>100.0</b>	<b>71,420</b>	<b>100.0</b>	1320
% female		51.7		52.0		52.1	
% male		48.3		48.0		47.9	

**Table 3**  
**Lambton County Age & Gender Profile**

	2001		2006		2001 to 2006 # Change
	#	%	#	%	
0 to 4 years	2,970	5.3	2,975	5.2	5
5 to 14 years	8,330	14.8	7,290	12.8	-1,040
15 to 19 years	4,480	8.0	4,225	7.4	-255
20 to 24 years	3,180	5.7	3,320	5.8	140
25 to 54 years	22,845	40.7	22,270	39.2	-575
55 to 64 years	6,145	11.0	7,785	13.7	1,640
65 to 74 years	4,610	8.2	4,855	8.5	245
75+ years	3,535	6.3	4,065	7.2	530
<b>TOTAL</b>	<b>56,095</b>	<b>100.0</b>	<b>56,785</b>	<b>100.0</b>	<b>690</b>
% female		50.3		50.2	
% male		49.7		49.8	

*Source: Census Canada*

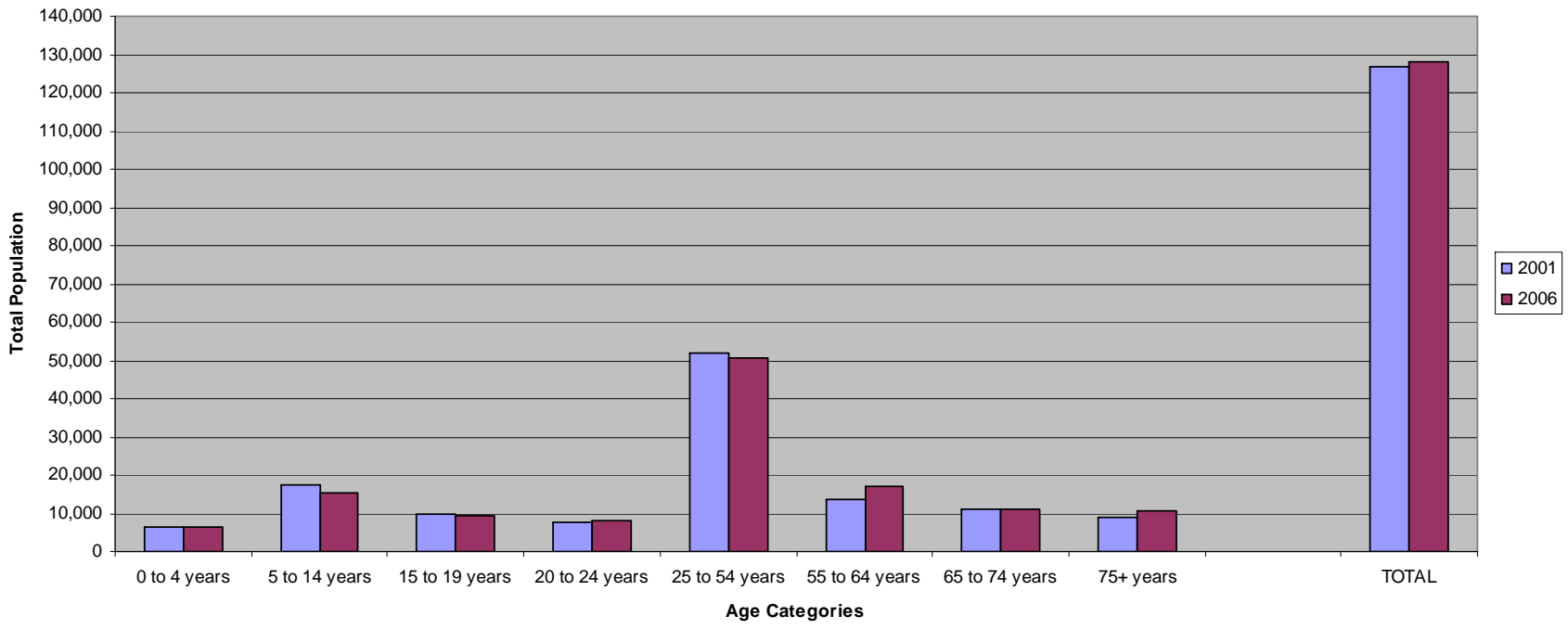
**Table 4**  
**Total Sarnia & Lambton County Age & Gender Profile**

	2001		2006		2001 to 2006 # Change
	#	%	#	%	
0 to 4 years	6,530	5.1	6,305	4.9	-225
5 to 14 years	17,650	13.9	15,390	12.0	-2,260
15 to 19 years	9,610	7.6	9,340	7.3	-270
20 to 24 years	7,475	5.9	8,060	6.3	585
25 to 54 years	52,090	41.0	50,455	39.4	-1,635
55 to 64 years	13,525	10.7	16,980	13.2	3,455
65 to 74 years	11,170	8.8	11,155	8.7	-15
75+ years	8,915	7.0	10,520	8.2	1,605
<b>TOTAL</b>	<b>126,965</b>	<b>100.0</b>	<b>128,205</b>		1,240
% female		51.3		51.3	
% male		48.7		48.7	

Source: Census Canada

# Figure 1

## Total Sarnia & Lambton County Age & Gender Profile



**Table 5**  
**2006 Age Demographics For Sarnia, Lambton & Ontario**

	<b>Sarnia</b>		<b>Lambton County</b>		<b>TOTAL</b>		<b>Ontario</b>	
	<b>#</b>	<b>%</b>	<b>#</b>	<b>%</b>	<b>#</b>	<b>%</b>	<b>#</b>	<b>%</b>
0 to 4 years	3,330	4.7	2,975	5.2	6,305	4.9	670,770	5.5
5 to 9 years	3,600	5.0	3,255	5.7	6,855	5.3	721,590	5.9
10 to 14 years	4,500	6.3	4,035	7.1	8,535	6.7	818,445	6.7
15 to 19 years	5,115	7.2	4,225	7.4	9,340	7.3	833,115	6.9
20 to 24 years	4,740	6.6	3,320	5.8	8,060	6.3	797,255	6.6

*Source: Census Canada*

**Table 6**  
**Ontario Age & Gender Profile**

	1996		2001		2006		2001 to 2006 # Change
	#	%	#	%	#	%	
0 to 4 years	734,170	6.8	671,250	5.9	670,770	5.5	-480
5 to 14 years	1,480,055	13.8	1,561,500	13.7	1,540,035	12.7	-21,465
15 to 19 years	698,000	6.5	769,420	6.7	833,115	6.9	63,695
20 to 24 years	703,475	6.5	718,420	6.3	797,255	6.6	78,835
25 to 54 years	4,863,980	45.2	5,153,290	45.2	5,313,425	43.7	160,135
55 to 64 years	939,795	8.7	1,064,000	9.3	1,356,515	11.2	292,515
65 to 74 years	793,470	7.4	818,165	7.2	868,190	7.1	50,025
75+ years	540,635	5.0	654,005	5.7	780,990	6.4	126,985
<b>TOTAL</b>	<b>10,753,580</b>	<b>100.0</b>	<b>11,410,050</b>	<b>100.0</b>	<b>12,160,295</b>	<b>100.0</b>	750,245
% female		51.1		51.2		51.2	
% male		48.9		48.8		48.8	

Source: Census Canada



**Table 7**  
**Catholic Religious Affiliation**

	<b>2001</b>	
	<b>#</b>	<b>%</b>
Sarnia	27,250	31.2
Lambton	8,145	14.5
<b>TOTAL</b>	<b>35,935</b>	<b>28.3</b>

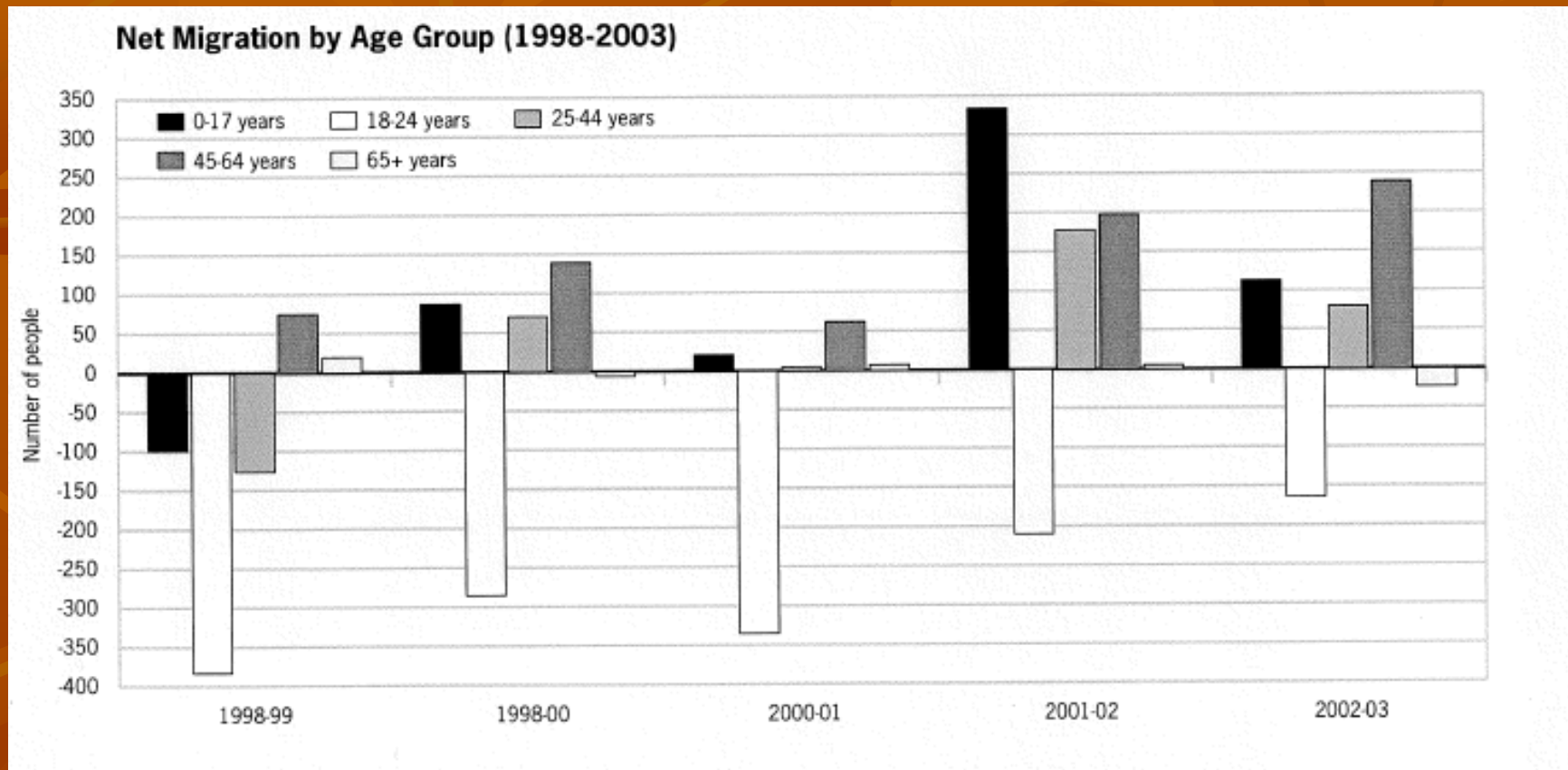
*Source: Census Canada*

**Table 8**  
**Ethnicity / Born Outside of Canada**

	1996		2001		2006	
	#	%	#	%	#	%
Sarnia	11,025	15.2	9,920	14.0	9,970	14.0
Lambton County			4,595	8.2	4,730	8.3
TOTAL			14,515	11.4	14,700	11.5
Ontario	2,724,490	25.3	3,030,075	26.6	3,398,725	28.0

*Source: Census Canada*

# Figure 2



# Figure 3

## Historical and Future Population Change Sarnia-Lambton vs. Ontario 1996-2031 Ontario Ministry of Finance

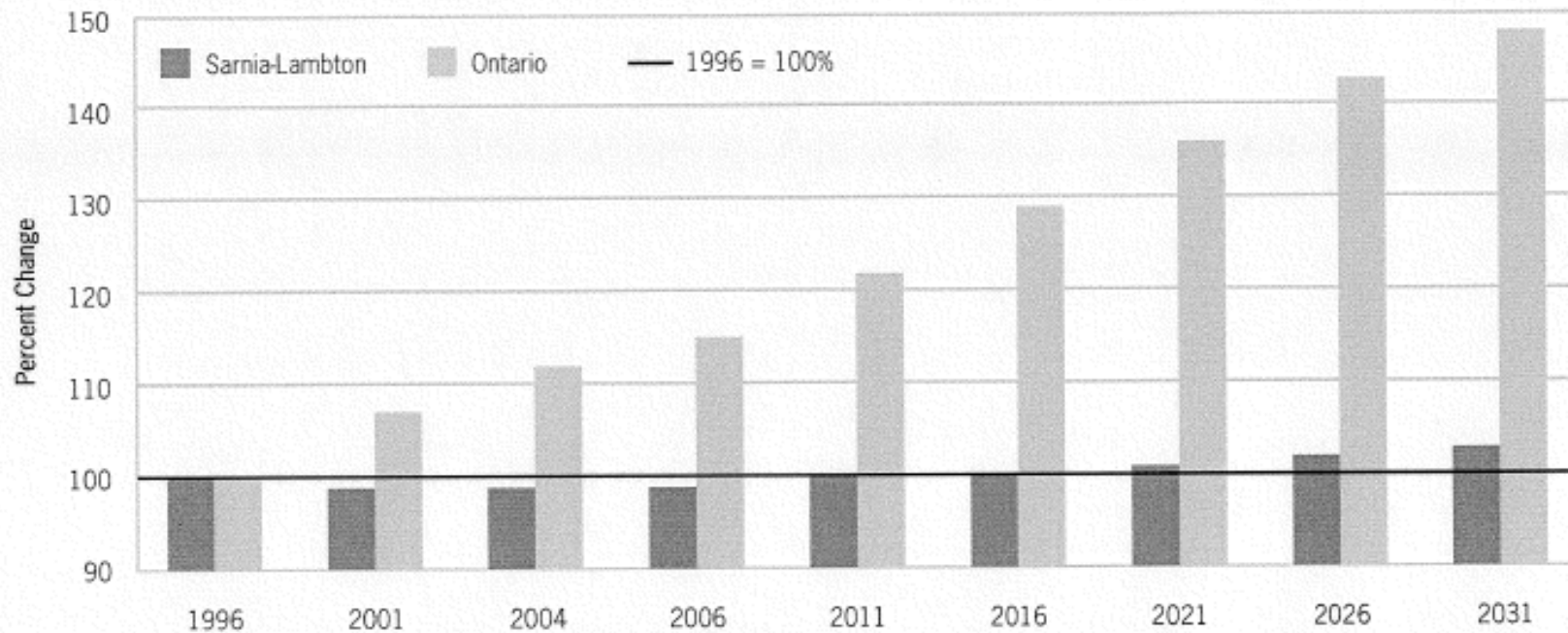


Figure 1B – Source: Ontario Population Projections, 2004-2031, Ontario and its 49 Census Divisions, Ministry of Finance.

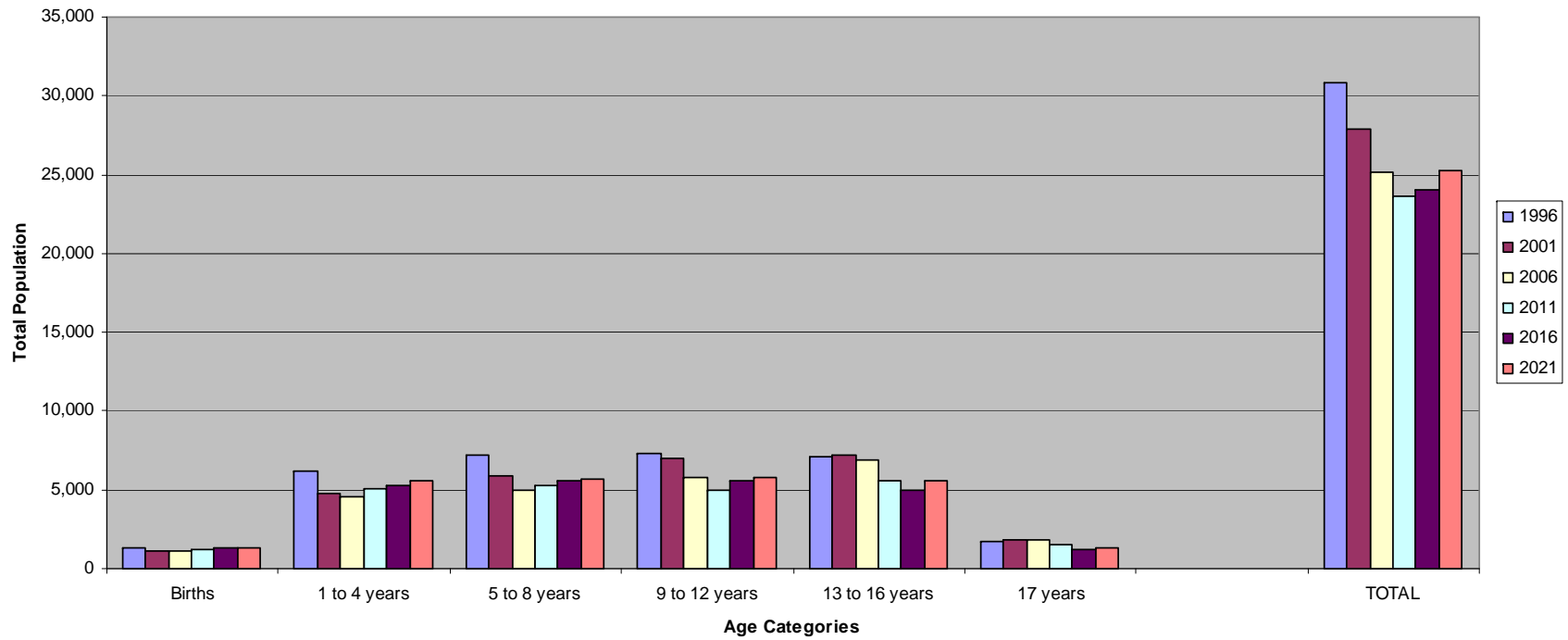
**Table 9**  
**Total Sarnia-Lambton Children & Youth Population Projections**

	<b>1996</b>	<b>2001</b>	<b>2006</b>	<b>2011</b>	<b>2016</b>	<b>2021</b>
Births	1,327	1,135	1,162	1,232	1,313	1,359
1 to 4 years	6,168	4,807	4,613	5,086	5,312	5,568
5 to 8 years	7,180	5,895	4,942	5,315	5,612	5,654
9 to 12 years	7,329	7,043	5,778	4,985	5,566	5,778
13 to 16 years	7,146	7,230	6,848	5,543	4,995	5,603
17 years	1,705	1,804	1,814	1,511	1,228	1,329
<b>TOTAL</b>	<b>30,855</b>	<b>27,914</b>	<b>25,157</b>	<b>23,672</b>	<b>24,026</b>	<b>25,291</b>

*Source: St. Clair Catholic District School Board - Baragar Data*

# Figure 4

## Total Sarnia-Lambton Children & Youth Population Projections



# Key Trends

- Sarnia's 0 to 19 population had 3,295 fewer children and youth from 1996 to 2006
- Lambton County's 0 to 19 population had 1,290 fewer children and youth from 2001 to 2006
- The female proportion of the population is trending higher marginally in Sarnia
- About 28.3% of the population self-identified as being of the Catholic faith in the 2001 Census – 31.2% in Sarnia and 14.5% in the County
- The number of children and youth declined significantly from 1996 to 2001 except for 13 to 16 year olds and 17 year olds (Echo Boom) with almost 3,000 fewer children and youth

# Key Trends

- All children and youth age levels declined from 2001 to 2006 except for 17 year olds with almost 3,000 fewer children and youth
- The 2011 forecast calls for 1,500 fewer children and youth but with a reversed trend of gains for birth to 8 years and declines for the older ages
- By 2016, 354 more children and youth are projected with all age categories except 13 to 16 and 17 years olds growing
- For 2021, all age categories show growth, totaling 1,265 more children and youth in 2016
- The 2016 projections start a turning point for fewer to stable and then a growing number of children and youth



# Key Trends

- Stagnant growth in the overall Sarnia-Lambton population
- For 50+ ages Sarnia-Lambton exceeds provincial growth rate
- For 50 & under ages, Sarnia-Lambton has less growth than the province
- An aging population is more pronounced in Sarnia-Lambton
- Reduced younger work force retention in Sarnia-Lambton is due to lack of employment opportunities
- Migration has to date had little impact on the population based on 1998 to 2003 data indicating 19,979 people moved into the area and 19,930 left Sarnia-Lambton, an impact of only 49 people
- The cultural mix of the population is stable compared to Ontario which has increased 2.8 percentage points proportionately – 25.2% in 1996 to 28.0% in 2006