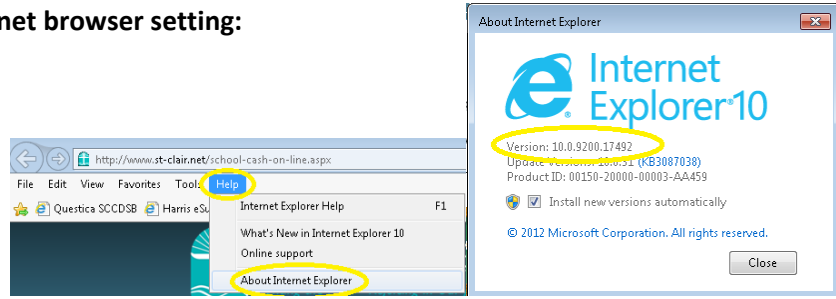


Microsoft Internet Explorer Browser Setting Instructions

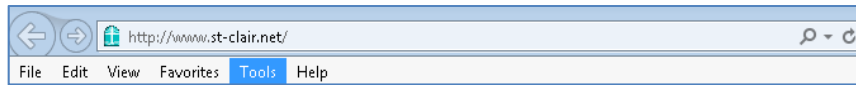
A. How to Check your Internet browser setting:

1. Select Help
2. Select About
shows version IE 10

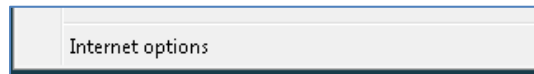


B. Please update your Microsoft Windows Explorer as follows:

1. Go to Tools



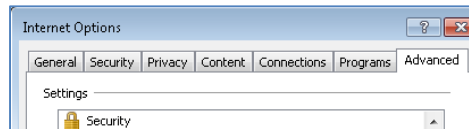
2. Select Internet Options



3. Advanced

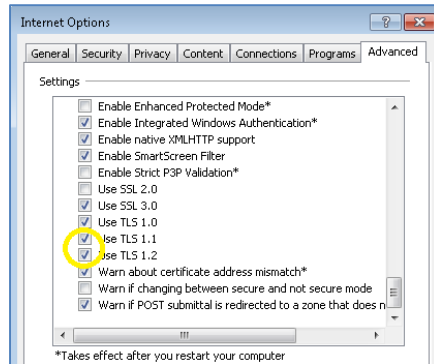


5. Scroll down to Security



4. Check on settings

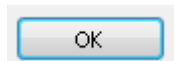
- TSL1.1
- TLS1.2



5. Click Apply



5. Click OK



➔ Now, retry the link to School Cash Online

Thank-you for your patience!